

## Requirements for the technical condition of semi-trailers

---

- The condition of semi-trailers is checked immediately at the entrance gate.
- If certain inconsistencies are found during the inspection of the semi-trailer, it will not be accepted. Nevertheless, the driver they will be allowed to remove them before entering the terminal yard.
- In case of a special need to perform the transshipment in the warehouse of the terminal, the terminal is ready to assist.

### Pre-entry control

---

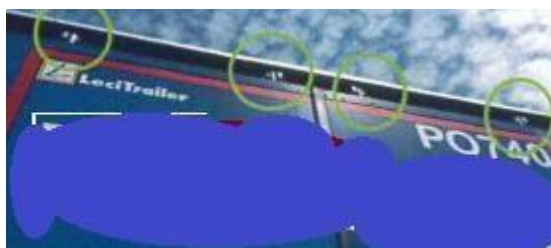
- the TIR cable must be intact (not broken) and must be connected and pulled through all the buckles.



- the TIR cable must pass through the hinge of the rod.



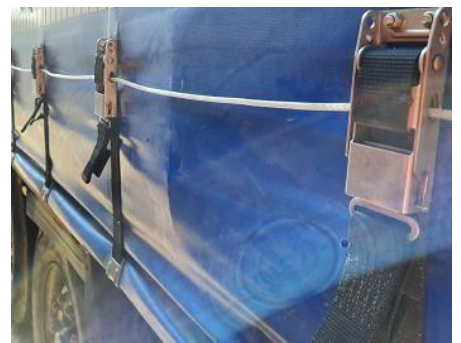
- Both ends of the cable of the TIR semi-trailer must be attached with a clamp or stamp to the door / rear.
- The TIR cable must be solid, i. y. without knots.
- A maximum of 3 buckles may be missing on the entire side of the semi-trailer. Also, the buckles cannot be missed immediately after each other.
- Both doors must be properly locked at the bottom of the door handle and on the roof of the semi-trailer.



- The tarpaulin tape must be attached and correctly inserted into the holder.



- The load must not rest on the sheet in any way. Protrusion of sharp objects through



the awning is prohibited.

- It is forbidden to transport cargo leaning on the sheet or sharp points on the sheet. Also, the rattle must not be pushed against the tarpaulin.
- Awnings must be tensioned / no tears / holes / cracks in the cover.



- Previous stickers / labels of dangerous goods must be completely removed.



- The metal guard or bumper must be below the frame / body (if the codification letters (c3 e, f g, etc.) corresponds to the wagon, no need to be placed under the frame).
- The foot lever of the semi-trailer must be properly attached to the frame / bottom of the trailer. If it is if not possible, it must be clamped.